

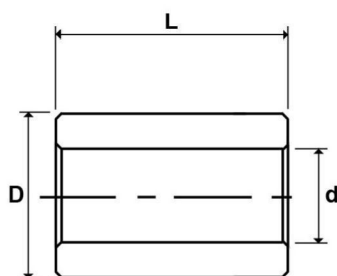
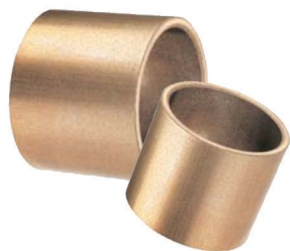
Oilite & Glacier



CONTENTS

	Page
Sintered Oilite Bush	
Metric Plain	1
Metric Flanged	2
Imperial Plain	3
Imperial Flanged	4
Oilite Washers	5
Oilite Bar	6
Glacier Bush	
Metric DU (PTFE)	7
Metric Flanged DU (PTFE)	8
Imperial DU (PTFE)	9
DU Washers & Strip	10
Metric DX (Acetal)	11
Imperial DX (Acetal)	12
DX Washers & Strip	13

This information is a guide only. BearingsRus are not responsible for any incorrect data.



Metric Plain Oilite Bush

OILITE BUSH

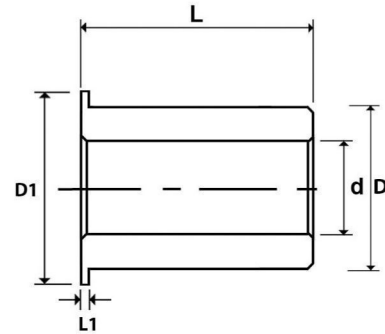
Reference (d x D x L)	Bore (d)	Outside Diameter (D)	Lengths (L)
AMC0204**	2	4	4
AMC0205**	2	5	2 - 3 - 4 - 5
AMC0305**	3	5	3 - 4 - 6
AMC0306**	3	6	3 - 4
AMC0308**	3	8	4
AMC0407**	4	7	3 - 4 - 6
AMC0408**	4	8	3 - 4 - 6 - 8 - 12
AMC0410**	4	10	8
AMC0508**	5	8	4 - 5 - 8 - 10 - 12 - 16
AMC0509**	5	9	4 - 5 - 8
AMC0510**	5	10	6 - 8 - 10
AMC0512**	5	12	10
AMC0609**	6	9	4 - 6 - 10 - 12 - 16
AMC0610**	6	10	4 - 6 - 10 - 12 - 16
AMC0612**	6	12	6 - 8 - 12
AMC0614**	6	14	12
AMC0710**	7	10	5 - 8 - 10
AMC0711**	7	11	8 - 10
AMC0811**	8	11	6 - 8 - 12
AMC0812**	8	12	6 - 8 - 12 - 16 - 20
AMC0814**	8	14	8 - 12 - 16 - 20
AMC0818**	8	18	16
AMC0912**	9	12	6 - 10 - 14
AMC0914**	9	14	6 - 10 - 14
AMC1013**	10	13	10 - 16
AMC1014**	10	14	8 - 10 - 16 - 20 - 25
AMC1015**	10	15	10 - 16 - 20 - 25
AMC1016**	10	16	8 - 10 - 16 - 20 - 25
AMC1022**	10	22	20
AMC1215**	12	15	12 - 16 - 20 - 25
AMC1216**	12	16	8 - 12 - 16 - 20 - 25
AMC1218**	12	18	8 - 12 - 16 - 20 - 25
AMC1225**	12	25	25
AMC1418**	14	18	10 - 14 - 20
AMC1420**	14	20	10 - 12 - 14 - 20 - 30
AMC1428**	14	28	30
AMC1519**	15	19	10 - 15 - 20 - 25 - 30
AMC1520**	15	20	10 - 15 - 20 - 25 - 30
AMC1521**	15	21	10 - 15 - 20 - 25
AMC1522**	15	22	16 - 20 - 30
AMC1530**	15	30	30
AMC1620**	16	20	12 - 16 - 20 - 25 - 30
AMC1622**	16	22	12 - 16 - 20 - 25 - 30
AMC1632**	16	32	30
AMC1822**	18	22	12 - 18 - 30
AMC1824**	18	24	12 - 18 - 30
AMC1825**	18	25	16 - 20 - 22 - 30
AMC1835**	18	35	30
AMC2024**	20	24	16 - 20 - 25 - 32
AMC2025**	20	25	15 - 20 - 25 - 30
AMC2026**	20	26	15 - 20 - 25 - 30
AMC2028**	20	28	20 - 25 - 30 - 40 - 50
AMC2040**	20	40	40
AMC2227**	22	27	15 - 20 - 25
AMC2228**	22	28	15 - 20 - 25 - 28 - 30
AMC2232**	22	32	20 - 30 - 50

Reference (d x D x L)	Bore (d)	Outside Diameter (D)	Lengths (L)
AMC2530**	25	30	20 - 25 - 30 - 50
AMC2532**	25	32	20 - 25 - 30 - 35 - 40
AMC2535**	25	35	25 - 35 - 50
AMC2545**	25	45	35
AMC2833**	28	33	20 - 30
AMC2836**	28	36	20 - 25 - 30 - 40
AMC3035**	30	35	20 - 25 - 30
AMC3038**	30	38	20 - 25 - 30 - 40
AMC3040**	30	40	25 - 30 - 35 - 45 - 50 - 60
AMC3050**	30	50	60
AMC3238**	32	38	20 - 25 - 30
AMC3240**	32	40	20 - 25 - 30 - 40 - 50
AMC3541**	35	41	25 - 35 - 40
AMC3544**	35	44	22 - 28 - 35
AMC3545**	35	45	25 - 35 - 40 - 50 - 70
AMC3642**	36	42	22 - 28 - 36 - 45
AMC3645**	36	45	22 - 28 - 36 - 45
AMC3844**	38	44	25 - 35 - 45
AMC3848**	38	48	25 - 35 - 45 - 55
AMC4046**	40	46	30 - 40 - 50
AMC4050**	40	50	25 - 30 - 32 - 35 - 40 - 50 - 60 - 80
AMC4248**	42	48	40 - 50
AMC4252**	42	52	40 - 50
AMC4551**	45	51	35 - 45 - 55
AMC4555**	45	55	35 - 45 - 55 - 60 - 65 - 75
AMC4556**	45	56	28 - 36 - 45 - 56
AMC4565**	45	65	80
AMC4855**	48	55	50
AMC4858**	48	58	50
AMC5058**	50	58	35 - 50
AMC5060**	50	60	30 - 35 - 40 - 50 - 63 - 70 - 75 - 100
AMC5070**	50	70	70
AMC5563**	55	63	40 - 55
AMC5565**	55	65	40 - 55 - 70
AMC5570**	55	70	70
AMC6068**	60	68	50 - 60 - 70
AMC6070**	60	70	50 - 60
AMC6072**	60	72	50 - 60 - 70
AMC6075**	60	75	60 - 90
AMC6085**	60	85	90
AMC6370**	63	70	40 - 50
AMC6575**	65	75	60 - 90
AMC6580**	65	80	60 - 90
AMC7080**	70	80	60 - 90
AMC7085**	70	85	60 - 90
AMC7585**	75	85	70 - 100
AMC7590**	75	90	70 - 100
AMC75100**	75	100	100
AMC8090**	80	90	70 - 100
AMC8095**	80	95	70 - 100
AMC80105**	80	105	100
AMC8595**	85	95	100
AMC85100**	85	100	100
AMC90105**	90	105	80
AMC90110**	90	110	80
AMC100120**	100	120	80

Non standard lengths can be supplied.



Metric Flanged Oilite Bush



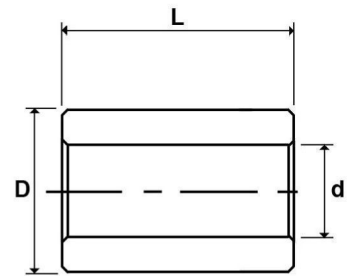
Reference (d x D x L)	Bore (d)	Outside Diameter (D)	Lengths (L)	Flange Size (D1 x L1)
AMF0205**	2	5	3	8 x 1.5
AMF0305**	3	5	4	8 x 1.5
AMF0306**	3	6	4	9 x 1.5
AMF0408**	4	8	6	10 x 1.5
AMF0408**	4	8	4 - 6 - 8 - 12	12 x 2
AMF0509**	5	9	4 - 5 - 8	13 x 2
AMF0510**	5	10	6	12 x 2
AMF0610**	6	10	4 - 6 - 10	14 x 2
AMF0612**	6	12	6	14 x 2
AMF0710**	7	10	5 - 8 - 10	14 x 2
AMF0711**	7	11	8	15 x 2
AMF0712**	7	12	5 - 8 - 10	15 x 2
AMF0812**	8	12	6 - 8 - 12 - 16	16 x 2
AMF0814**	8	14	8	18 x 3
AMF0914**	9	14	6 - 10 - 14	19 x 2.5
AMF1013**	10	13	8 - 10 - 16 - 20	17 x 2.5
AMF1015**	10	15	10 - 16 - 20	21 x 3
AMF1016**	10	16	8 - 10	20 x 3
AMF1016**	10	16	8 - 10 - 16	22 x 3
AMF1215**	12	15	12 - 16 - 20	21 x 3
AMF1217**	12	17	12 - 16 - 20 - 25	23 x 3
AMF1218**	12	18	10 - 12	22 x 3
AMF1218**	12	18	8 - 12 - 20	24 x 3
AMF1420**	14	20	10 - 12	25 x 3
AMF1420**	14	20	10 - 14 - 20	26 x 3
AMF1519**	15	19	16 - 20 - 25	25 x 3
AMF1521**	15	21	10 - 15 - 20 - 25	27 x 3
AMF1522**	15	22	12 - 16	28 x 3
AMF1620**	16	20	16 - 20 - 25	27 x 3
AMF1622**	16	22	12 - 16 - 20 - 25	28 x 3
AMF1622**	16	22	12 - 16	28 x 4
AMF1824**	18	24	12 - 18 - 22 - 30	30 x 3

Reference (d x D x L)	Bore (d)	Outside Diameter (D)	Lengths (L)	Flange Size (D1 x L1)
AMF1825**	18	25	12 - 16	32 x 4
AMF2024**	20	24	16 - 20 - 25	30 x 3
AMF2026**	20	26	15 - 20 - 25 - 30	32 x 3
AMF2028**	20	28	16 - 20	35 x 4
AMF2228**	22	28	15 - 20 - 25 - 30	34 x 3
AMF2530**	25	30	20 - 25 - 32	39 x 3.5
AMF2532**	25	32	20 - 25 - 30	39 x 3.5
AMF2535**	25	35	16 - 25	45 x 5
AMF2832**	28	32	20 - 25 - 30	40 x 4
AMF2835**	28	35	20 - 25 - 30	42 x 4
AMF2836**	28	36	20 - 25 - 30	44 x 4
AMF3038**	30	38	20 - 25 - 30	46 x 4
AMF3040**	30	40	20 - 30	50 x 5
AMF3238**	32	38	20 - 25 - 32	46 x 4
AMF3240**	32	40	20 - 25 - 30	48 x 4
AMF3545**	35	45	20 - 25 - 35 - 40	55 x 5
AMF3848**	38	48	25 - 35 - 45	58 x 5
AMF4046**	40	46	25 - 32 - 40	56 x 5
AMF4050**	40	50	25 - 30 - 40 - 50	60 x 5
AMF4050**	40	50	25 - 40	60 x 6
AMF4252**	42	52	30 - 40 - 50	62 x 5
AMF4555**	45	55	35 - 45 - 55	65 x 5
AMF4555**	45	55	30 - 45	65 x 6
AMF5060**	50	60	32 - 35 - 40 - 50	70 x 5
AMF5060**	50	60	30 - 50	70 x 6
AMF6072**	60	72	50 - 60	84 x 6
AMF6075**	60	75	35 - 60	85 x 8
AMF7085**	70	85	60	95 x 8
AMF8095**	80	95	70	105 x 8
AMF90110**	90	110	50	120 x 8
AMF100120**	100	120	80	130 x 8

Non standard lengths can be supplied.

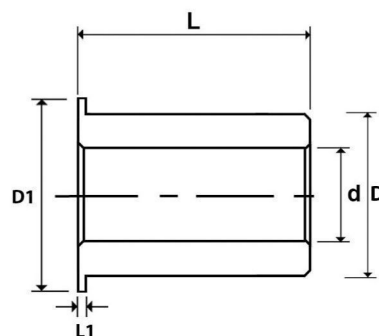
Imperial Plain Oilite Bush

Reference (d x D x L)	Bore (d)	Outside Diameter (D)	Lengths (L)
AIC0305**	3/16	5/16	1/4 - 3/8 - 1/2 - 5/8 - 3/4 - 1
AIC0406**	1/4	3/8	1/4 - 3/8 - 1/2 - 5/8 - 3/4
AIC0407**	1/4	7/16	1/4 - 3/8 - 1/2 - 5/8 - 3/4
AIC0408**	1/4	1/2	3/8 - 1/2 - 3/4
AIC0507**	5/16	7/16	5/16 - 3/8 - 1/2 - 9/16 - 5/8 - 3/4 - 1
AIC0508**	5/16	1/2	1/4 - 3/8 - 1/2 - 5/8 - 3/4
AIC0608**	3/8	1/2	3/8 - 1/2 - 5/8 - 3/4 - 7/8 - 1 - 1 1/8 - 1 1/4
AIC0610**	3/8	5/8	3/8 - 1/2 - 5/8 - 3/4 - 7/8 - 1
AIC0709**	7/16	9/16	3/8 - 1/2 - 5/8 - 3/4 - 1
AIC0711**	7/16	11/16	1/2 - 1 1/4
AIC0810**	1/2	5/8	3/8 - 1/2 - 5/8 - 3/4 - 7/8 - 1 - 1 1/8 - 1 1/4 - 1 1/2
AIC0811**	1/2	11/16	1/2 - 5/8 - 3/4 - 7/8 - 1 - 1 1/4
AIC0812**	1/2	3/4	1/2 - 5/8 - 3/4 - 7/8 - 1 - 1 1/8 - 1 1/4 - 1 1/2 - 2
AIC0911**	9/16	11/16	1/2 - 5/8 - 3/4 - 1 - 1 1/4
AIC0912**	9/16	3/4	1
AIC1012**	5/8	3/4	1/2 - 9/16 - 5/8 - 3/4 - 7/8 - 1 - 1 1/4
AIC1013**	5/8	13/16	3/4 - 1 - 1 1/4 - 1 3/8
AIC1014**	5/8	7/8	1/2 - 5/8 - 3/4 - 7/8 - 1 - 1 1/8 - 1 1/4
AIC1115**	11/16	15/16	7/8 - 1 - 1 1/4
AIC1214**	3/4	7/8	1/2 - 5/8 - 3/4 - 7/8 - 1 - 1 1/8 - 1 1/4
AIC1215**	3/4	15/16	3/4 - 1
AIC1216**	3/4	1	5/8 - 3/4 - 7/8 - 1 - 1 1/8 - 1 1/4 - 1 1/2 - 1 3/4 - 2
AIC1218**	3/4	1 1/8	3/4 - 1 - 1 1/4
AIC1220**	3/4	1 1/4	1 1/8 - 1 3/8 - 1 1/2 - 2
AIC1416**	7/8	1	3/4 - 1 - 1 1/8 - 1 1/4 - 1 1/2
AIC1418**	7/8	1 1/8	3/4 - 7/8 - 1 - 1 1/8 - 1 1/4 - 1 1/2
AIC1618**	1	1 1/8	3/4 - 1 - 1 1/4 - 1 1/2
AIC1620**	1	1 1/4	3/4 - 7/8 - 1 - 1 1/8 - 1 1/4 - 1 3/8 - 1 1/2 - 1 5/8 - 1 3/4 - 2
AIC1624**	1	1 1/2	1 - 1 3/8 - 1 1/2 - 1 3/4 - 2
AIC1822**	1 1/8	1 3/8	3/4 - 1 - 1 1/4 - 1 1/2 - 1 3/4 - 2
AIC2024**	1 1/4	1 1/2	7/8 - 1 - 1 1/4 - 1 3/8 - 1 1/2 - 1 3/4 - 1 7/8 - 2
AIC2026**	1 1/4	1 5/8	1 - 1 1/4 - 1 1/2 - 1 3/4 - 2 - 2 1/2
AIC2226**	1 3/8	1 5/8	1 - 1 1/4 - 1 1/2 - 1 3/4 - 2
AIC2228**	1 3/8	1 3/4	1 1/4 - 1 1/2 - 1 3/4 - 2 - 2 1/4
AIC2428**	1 1/2	1 3/4	1 1/4 - 1 1/2 - 1 3/4 - 2 - 2 1/4
AIC2430**	1 1/2	1 7/8	1 1/4 - 1 1/2 - 1 3/4 - 2 - 2 1/4
AIC2432**	1 1/2	2	1 1/2 - 2 - 2 1/2 - 3
AIC2633**	1 5/8	2 1/16	1 7/8 - 2 - 2 1/2
AIC2832**	1 3/4	2	1 1/4 - 1 1/2 - 1 3/4 - 2 - 2 1/4
AIC2836**	1 3/4	2 1/4	1 1/2 - 1 3/4 - 2 - 2 1/4
AIC3236**	2	2 1/4	1 1/2 - 1 3/4 - 2 - 2 1/2
AIC3238**	2	2 3/8	1 1/2 - 2 1/2 - 3
AIC3240**	2	2 1/2	1 1/2 - 1 3/4 - 2 - 2 1/4 - 2 1/2 - 3
AIC3642**	2 1/4	2 5/8	2 1/2 - 3
AIC3644**	2 1/4	2 3/4	1 1/2 - 2 - 2 1/2 - 3
AIC4046**	2 1/2	2 7/8	2 1/2 - 3
AIC4048**	2 1/2	3	1 1/2 - 2 - 2 1/2 - 3
AIC4856**	3	3 1/2	2 1/2 - 3
AIC5664**	3 1/2	4	3
AIC6472**	4	4 1/2	4



Non standard lengths can be supplied.

Imperial Flanged Oilite Bush

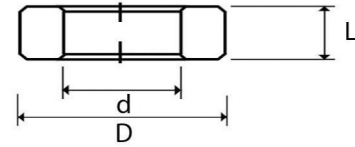


Reference (d x D x L)	Bore (d)	Outside Diameter (D)	Lengths (L)	Flange Size (D1 x L1)
AIF0305**	3/16	5/16	1/4 - 3/8 - 1/2	3/8 x 1/16
AIF0406**	1/4	3/8	1/4 - 3/8 - 1/2 - 3/4	1/2 x 1/16
AIF0508**	5/16	1/2	1/4 - 3/8 - 1/2 - 3/4	5/8 x 1/16
AIF0608**	3/8	1/2	1/2 - 7/8	5/8 x 1/16
AIF0608**	3/8	1/2	1/2 - 3/4 - 7/8	5/8 x 0.14
AIF0609**	3/8	9/16	1/2	3/4 x 1/16
AIF0610**	3/8	5/8	3/8 - 1/2 - 5/8 - 3/4	3/4 x 1/8
AIF0709**	7/16	9/16	1/2 - 5/8 - 3/4	3/4 x 1/16
AIF0810**	1/2	5/8	1/2 - 1	3/4 x 3/32
AIF0812**	1/2	3/4	1/2 - 3/4 - 1 - 1 1/8	1 x 1/8
AIF1012**	5/8	3/4	1/2 - 1 - 1 1/8	1 1/8 x 3/32
AIF1014**	5/8	7/8	1/2 - 3/4 - 1 - 1 1/8 - 1 1/4	1 1/4 x 1/8
AIF1216**	3/4	1	3/4 - 1 - 1 1/4 - 1 1/2	1 3/8 x 1/8
AIF1416**	7/8	1	1	1 1/4 x 1/8
AIF1418**	7/8	1 1/8	3/4 - 1 - 1 1/4 - 1 1/2	1 5/8 x 1/8
AIF1620**	1	1 1/4	1 - 1 1/4 - 1 1/2 - 1 3/4 - 2	1 3/4 x 1/8
AIF1620**	1	1 1/4	3/4 - 1 - 1 1/8 - 1 1/2	1 1/2 x 1/8
AIF1822**	1 1/8	1 3/8	1 - 1 1/4 - 1 1/2 - 1 3/4	1 7/8 x 1/8
AIF2024**	1 1/4	1 1/2	3/4 - 1 1/4 - 1 1/2	1 7/8 x 1/8
AIF2026**	1 1/4	1 5/8	1 - 1 1/4 - 1 1/2 - 1 3/4	2 x 1/8
AIF2226**	1 3/8	1 5/8	3/4 - 1 1/4	1 7/8 x 1/8
AIF2428**	1 1/2	1 3/4	1 1/2 - 1 7/8	1 7/8 x 1/8
AIF2430**	1 1/2	1 7/8	1 - 1 1/4 - 1 1/2 - 1 3/4 - 2	2 1/2 x 3/16

Non standard lengths can be supplied.



Imperial Oilite Washer



Bore (d)	Outside Diameter (D)	Lengths (L)
$\frac{3}{8}$	$\frac{5}{8}$	$\frac{1}{16} - \frac{1}{8}$
$\frac{1}{2}$	$\frac{3}{4}$	$\frac{1}{16}$
$\frac{1}{2}$	$\frac{7}{8}$	$\frac{1}{8}$
$\frac{1}{2}$	1	$\frac{1}{16} - \frac{3}{32} - \frac{1}{8}$
$\frac{17}{32}$	$1 \frac{1}{8}$	$\frac{1}{16}$
$\frac{5}{8}$	1	$\frac{1}{16}$
$\frac{5}{8}$	$1 \frac{1}{4}$	$\frac{1}{8}$
$\frac{21}{32}$	$1 \frac{1}{4}$	$\frac{3}{32}$
$\frac{3}{4}$	$1 \frac{1}{4}$	$\frac{1}{16} - \frac{1}{8}$
$\frac{25}{32}$	$1 \frac{1}{2}$	$\frac{1}{8}$
$\frac{7}{8}$	$1 \frac{1}{2}$	$\frac{1}{8}$
$\frac{7}{8}$	$1 \frac{55}{64}$	$\frac{1}{8}$
1	$1 \frac{1}{2}$	$\frac{1}{8}$
1	$1 \frac{25}{32}$	$\frac{1}{8}$
$1 \frac{1}{32}$	2	$\frac{1}{8}$
$1 \frac{1}{4}$	$1 \frac{7}{8}$	$\frac{1}{8}$
$1 \frac{1}{4}$	3	$\frac{1}{8} - \frac{1}{4}$
$1 \frac{13}{32}$	$2 \frac{1}{2}$	$\frac{5}{32}$
$1 \frac{1}{2}$	$2 \frac{1}{2}$	$\frac{1}{8}$
$1 \frac{1}{2}$	$3 \frac{1}{2}$	$\frac{3}{16}$
$1 \frac{5}{8}$	$2 \frac{3}{8}$	$\frac{1}{8}$
$1 \frac{3}{4}$	$2 \frac{5}{8}$	$\frac{1}{8}$
2	3	$\frac{1}{4}$
$2 \frac{1}{4}$	$3 \frac{1}{2}$	$\frac{1}{8}$

Non standard lengths can be supplied.



Sintered Cored & Solid Bars

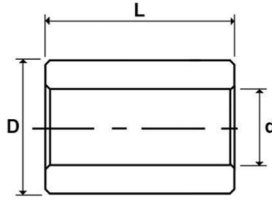


Cored Oilite Bars

Outside Diameter	Bore	Length
(inch)		
1	1/2	6 1/2
1 1/2	1/2	6 1/2
1 3/8	5/8	6 1/2
1 1/2	5/8	6 1/2
2	3/4	6 1/2
1 1/2	7/8	6 1/2
2	7/8	6 1/2
2 1/4	7/8	6 1/2
1 1/2	1	6 1/2
1 3/8	1	6 1/2
2	1	6 1/2
3	1	6 1/2
2 1/8	1 1/8	6 1/2
2 1/2	1 1/2	6 1/2
3	1 1/2	6 1/2
3	1 3/4	6 1/2
3 1/2	1 3/4	6 1/2
3	2	6 1/2
4	2	6 1/2
4 1/2	2	6 1/2
4 1/2	2 1/4	6 1/2
3	2 3/8	6 1/2
3 1/2	2 1/2	6 1/2
4	2 1/2	6 1/2
5	2 1/2	6 1/2
4	3	6 1/2
4 1/2	3	6 1/2
4 3/4	3 1/2	6 1/2
5	3 3/4	6 1/2
6	4	6 1/2
6	4 1/2	6 1/2
7	5	6 1/2
7	5	6 1/2

Solid Oilite Bars

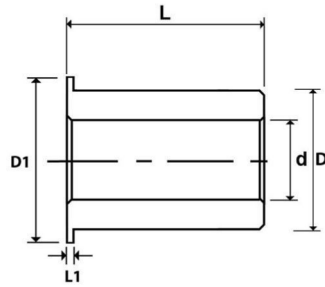
Outside Diameter	Length
(inch)	
3/8	3
1/2	6 1/2
3/4	2
0.787	2.047
1	6 1/2
1 1/8	6 1/2
1 1/2	6 1/2
1.574	2.047
2	6 1/2
2.362	2.362
2 3/4	6 1/2
3.149	3.149
3 1/4	6 1/2
6	6 1/2
8	6 1/2



Wrapped Metric Plain Bearing (MB...DU Bush) with PTFE Liner

PLAIN BEARING

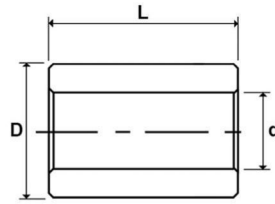
Reference (d x L)	Bore (mm) d	Outside Diameter (mm) D	Available Length (mm) L Tolerance +/- 0.25mm	Recommended Tolerances (mm)				Bearing size when fitted (mm)	
				Housing		Shaft		Bore	
MB03**DU	3	4.5	3 - 4 - 5 - 6	H6	0 +0.006	h6	0 -0.008	3.00	3.048
MB04**DU	4	5.5	3 - 4 - 6 - 10	H6	0 +0.008	h6	0 -0.008	4.00	4.048
MB05**DU	5	7	5 - 8 - 10	H7	0 +0.015	f7	-0.010 -0.022	4.99	5.055
MB06**DU	6	8	6 - 8 - 10	H7	0 +0.015	f7	-0.010 -0.022	5.99	6.055
MB07**DU	7	9	10	H7	0 +0.015	f7	-0.013 -0.028	6.99	7.055
MB08**DU	8	10	8 - 12	H7	0 +0.015	f7	-0.013 -0.028	7.99	8.055
MB10**DU	10	12	8 - 10 - 12 - 15 - 20	H7	0 +0.018	f7	-0.013 -0.028	9.99	10.058
MB12**DU	12	14	12 - 15 - 20 - 25	H7	0 +0.018	f7	-0.016 -0.034	11.99	12.058
MB13**DU	13	15	10 - 20	H7	0 +0.018	f7	-0.016 -0.034	12.99	13.058
MB14**DU	14	16	10 - 12 - 15 - 20 - 25	H7	0 +0.018	f7	-0.016 -0.034	13.99	14.058
MB15**DU	15	17	10 - 12 - 15 - 20 - 25	H7	0 +0.018	f7	-0.016 -0.034	14.99	15.058
MB16**DU	16	18	10 - 12 - 15 - 20 - 25	H7	0 +0.018	f7	-0.016 -0.034	15.99	16.058
MB17**DU	17	19	15 - 20	H7	0 +0.018	f7	-0.016 -0.034	16.99	17.061
MB18**DU	18	20	15 - 20 - 25	H7	0 +0.018	f7	-0.016 -0.034	17.99	18.061
MB20**DU	20	22	10	H7	0 +0.021	f7	-0.025 -0.046	19.99	20.061
MB20**DU	20	23	10 - 15 - 20 - 25 - 30	H7	0 +0.021	f7	-0.025 -0.046	19.99	20.071
MB22**DU	22	25	15 - 20 - 25 - 30	H7	0 +0.021	f7	-0.025 -0.046	21.99	22.071
MB24**DU	24	27	20 - 25 - 30	H7	0 +0.021	f7	-0.025 -0.046	23.99	24.071
MB25**DU	25	28	12 - 15 - 20 - 25 - 30 - 50	H7	0 +0.021	f7	-0.025 -0.046	24.99	25.071
MB28**DU	28	32	20 - 25 - 30	H7	0 +0.025	f7	-0.025 -0.050	27.99	28.085
MB30**DU	30	34	15 - 20 - 25 - 30 - 40	H7	0 +0.025	f7	-0.025 -0.050	29.99	30.085
MB32**DU	32	36	20 - 30 - 40	H7	0 +0.025	f7	-0.025 -0.050	31.99	32.085
MB35**DU	35	39	20 - 30 - 35 - 40 - 50	H7	0 +0.025	f7	-0.025 -0.050	34.99	35.085
MB36**DU	36	40	15 - 35	H7	0 +0.025	f7	-0.025 -0.050	35.99	36.085
MB40**DU	40	44	20 - 30 - 40 - 50	H7	0 +0.025	f7	-0.025 -0.050	39.99	40.085
MB45**DU	45	50	20 - 30 - 40 - 45 - 50	H7	0 +0.025	f7	-0.025 -0.050	44.99	45.105
MB50**DU	50	55	20 - 30 - 40 - 50 - 60	H7	0 +0.030	f7	-0.025 -0.050	49.99	50.110
MB55**DU	55	60	20 - 25 - 30 - 40 - 50 - 60	H7	0 +0.030	f7	-0.030 -0.060	54.99	55.110
MB60**DU	60	65	20 - 30 - 40 - 60 - 70	H7	0 +0.030	f7	-0.030 -0.060	59.99	60.110
MB65**DU	65	70	30 - 50 - 60 - 70	H7	0 +0.030	f7	-0.030 -0.060	64.99	65.110
MB70**DU	70	75	70	H7	0 +0.030	f7	-0.030 -0.060	69.99	70.110
MB75**DU	75	80	40 - 50 - 60 - 80	H7	0 +0.030	f7	-0.030 -0.060	74.99	75.110
MB80**DU	80	85	60 - 100	H7	0 +0.035	h8	-0.030 -0.060	80.02	80.155
MB85**DU	85	90	60 - 100	H7	0 +0.035	h8	-0.036 -0.071	85.02	85.155
MB90**DU	90	95	60 - 100	H7	0 +0.035	h8	-0.036 -0.071	90.02	90.155
MB95**DU	95	100	60 - 100	H7	0 +0.035	h8	-0.036 -0.071	95.02	95.155
MB100**DU	100	105	60 - 70 - 80 - 115	H7	0 +0.035	h8	-0.036 -0.071	100.02	100.155
MB105**DU	105	110	60 - 115	H7	0 +0.035	h8	-0.036 -0.071	105.02	105.155
MB110**DU	110	115	60 - 115	H7	0 +0.035	h8	-0.036 -0.071	110.02	110.155
MB115**DU	115	120	50 - 60 - 70	H7	0 +0.035	h8	-0.036 -0.071	115.02	115.155
MB120**DU	120	125	60 - 100	H7	0 +0.040	h8	-0.036 -0.071	120.07	120.210
MB125**DU	125	130	60 - 100	H7	0 +0.040	h8	-0.043 -0.083	125.07	125.210
MB130**DU	130	135	60 - 100	H7	0 +0.040	h8	-0.043 -0.083	130.07	130.210
MB135**DU	135	140	60 - 100	H7	0 +0.040	h8	-0.043 -0.083	135.07	135.210
MB140**DU	140	145	60 - 100	H7	0 +0.040	h8	-0.043 -0.083	140.07	140.210
MB145**DU	145	150	60 - 100	H7	0 +0.040	h8	-0.043 -0.083	145.07	145.210
MB150**DU	150	155	100	H7	0 +0.040	h8	-0.043 -0.083	150.07	150.210
MB155**DU	155	160	60 - 100	H7	0 +0.040	h8	-0.043 -0.083	155.07	155.210
MB160**DU	160	165	60 - 100	H7	0 +0.040	h8	-0.043 -0.083	160.07	160.210
MB165**DU	165	170	60 - 100	H7	0 +0.040	h8	-0.043 -0.083	165.07	165.210
MB170**DU	170	175	60 - 100	H7	0 +0.040	h8	-0.043 -0.083	170.07	170.210
MB175**DU	175	180	60 - 100	H7	0 +0.040	h8	-0.043 -0.083	175.07	175.210
MB180**DU	180	185	60 - 100	H7	0 +0.046	h8	-0.043 -0.083	180.07	180.216
MB200**DU	200	205	100	H7	0 +0.046	h8	-0.050 -0.096	200.07	200.216
MB220**DU	220	225	60 - 100	H7	0 +0.046	h8	-0.050 -0.096	220.07	220.216
MB250**DU	250	255	60 - 100	H7	0 +0.052	h8	-0.050 -0.096	250.07	250.222
MB280**DU	280	285	60 - 100	H7	0 +0.052	h8	-0.056 -0.108	280.07	280.222
MB300**DU	300	305	60 - 100	H7	0 +0.052	h8	-0.056 -0.108	300.07	300.222



Wrapped Metric Flanged Bearing (FMB...DU Bush) with PTFE Liner

PLAIN BEARING

Reference (d x L)	Bore (mm) d	Outside Diameter (mm) D	Available Length (mm) L Tolerance +/- 0.25mm	Flange Diameter D1 (mm)		Recommended Tolerances (mm)			Bearing size when fitted (mm)		
						Housing	Shaft		Bore		
FMB06**DU	6	8	4 - 7 - 8	11.5	12.5	0	+0.015	-0.010	-0.022	5.99	6.055
FMB08**DU	8	10	5.5 - 7.5 - 9.5	14.5	15.5	0	+0.015	-0.013	-0.028	7.99	8.055
FMB10**DU	10	12	7 - 9 - 12 - 17	17.5	18.5	0	+0.018	-0.013	-0.028	9.99	10.058
FMB12**DU	12	14	7 - 9 - 12 - 17	19.5	20.5	0	+0.018	-0.016	-0.034	11.99	12.058
FMB14**DU	14	16	12 - 17	21.5	22.5	0	+0.018	-0.016	-0.034	13.99	14.058
FMB15**DU	15	17	9 - 12 - 17	22.5	23.5	0	+0.018	-0.016	-0.034	14.99	15.058
FMB16**DU	16	18	12 - 17	23.5	24.5	0	+0.018	-0.016	-0.034	15.99	16.058
FMB18**DU	18	20	12 - 17 - 22	25.5	26.5	0	+0.021	-0.016	-0.034	17.99	18.061
FMB20**DU	20	23	11.5 - 16.5 - 21.5	29.5	30.5	0	+0.021	-0.020	-0.041	19.99	20.071
FMB25**DU	25	28	11.5 - 16.5 - 21.5	34.5	35.5	0	+0.021	-0.020	-0.041	24.99	25.071
FMB30**DU	30	34	16 - 26	41.5	42.5	0	+0.025	-0.020	-0.041	29.99	30.085
FMB35**DU	35	39	16 - 26	46.5	47.5	0	+0.025	-0.025	-0.050	34.99	35.085
FMB40**DU	40	44	16 - 26	52.5	53.5	0	+0.025	-0.025	-0.050	39.99	40.085
FMB45**DU	45	50	16 - 26	57.5	58.5	0	+0.025	-0.025	-0.050	44.99	45.105



Wrapped Imperial Plain Bearing (...DU... Bush) with PTFE Liner

PLAIN BEARING

Reference (d x L)	Bore (inch) d	Outside Diameter (inch) D	Available Length (inch) L Tolerance +/- 0.010"	Recommended Tolerances (inch)		Bearing size when fitted (inch)			
				Housing	Shaft	Bore			
03DU**	3/16	1/4	3/16 - 1/4 - 3/8	0.2497	0.2503	0.1858	0.1865	0.1867	0.1893
04DU**	1/4	5/16	1/4 - 3/8	0.3122	0.3128	0.2481	0.2490	0.2492	0.2518
05DU**	5/16	3/8	3/8 - 1/2	0.3747	0.3753	0.3106	0.3115	0.3117	0.3143
06DU**	3/8	15/32	3/8 - 1/2 - 5/8 - 3/4	0.4684	0.4691	0.3731	0.3740	0.3742	0.3769
07DU**	7/16	17/32	1/2 - 3/4	0.5309	0.5316	0.4355	0.4365	0.4367	0.4394
08DU**	1/2	19/32	3/8 - 1/2 - 5/8 - 7/8	0.5934	0.5941	0.4980	0.4990	0.4992	0.5019
09DU**	9/16	21/32	1/2 - 3/4	0.6559	0.6566	0.5605	0.5615	0.5617	0.5644
10DU**	5/8	23/32	1/2 - 5/8 - 3/4 - 7/8	0.7184	0.7192	0.6230	0.6240	0.6242	0.6270
11DU**	11/16	25/32	7/8	0.7809	0.7817	0.6855	0.6865	0.6867	0.6895
12DU**	3/4	7/8	1/2 - 3/4 - 1	0.8747	0.8755	0.7479	0.7491	0.7493	0.7525
14DU**	7/8	1	3/4 - 7/8 - 1	0.9997	1.0005	0.8729	0.8741	0.8743	0.8775
16DU**	1	1 1/8	3/4 - 1 - 1 1/4 - 1 1/2	1.1246	1.1256	0.9979	0.9991	0.9992	1.0026
18DU**	1 1/8	1 9/32	3/4 - 1	1.2808	1.2818	1.1226	1.1238	1.1240	1.1278
20DU**	1 1/4	1 13/32	3/4 - 1 - 1 1/4 - 1 3/4	1.4058	1.4068	1.2472	1.2488	1.2490	1.2528
22DU**	1 3/8	1 17/32	1 - 1 3/8 - 1 3/4	1.5308	1.5318	1.3722	1.3738	1.3740	1.3778
24DU**	1 1/2	1 21/32	1 - 1 1/4 - 1 1/2 - 2	1.6558	1.6568	1.4972	1.4988	1.4990	1.5028
26DU**	1 5/8	1 25/32	1 - 1 1/2	1.7808	1.7818	1.6222	1.6238	1.6240	1.6278
28DU**	1 3/4	1 15/16	1 - 1 1/2 - 1 3/4 - 2	1.9371	1.9381	1.7471	1.7487	1.7489	1.7535
30DU**	1 7/8	2 1/16	1 - 1 7/8 - 2 1/4	2.0621	2.0633	1.8721	1.8737	1.8739	1.8787
32DU**	2	2 3/16	1 - 1 1/2 - 2 - 2 1/2	2.1871	2.1883	1.9969	1.9987	1.9989	2.0037
36DU**	2 1/4	2 7/16	2 - 2 1/4 - 2 1/2 - 3	2.4365	2.4377	2.2489	2.5070	2.2509	2.2573
40DU**	2 1/2	2 11/16	2 - 2 1/2 - 3 - 3 1/2	2.6869	2.6881	2.4993	2.5011	2.5013	2.5077
44DU**	2 3/4	2 15/16	2 - 2 1/2 - 3 - 3 1/2	2.9358	2.9370	2.7482	2.7500	2.7502	2.7566
48DU**	3	3 3/16	2 - 3 - 3 3/4	3.1858	3.1872	2.9982	3.0000	3.0002	3.0068
56DU**	3 1/2	3 11/16	2 1/2 - 3 - 3 3/4	3.6858	3.6872	3.4978	3.5000	3.5002	3.5068
64DU**	4	4 3/16	3 - 3 3/4 - 4 3/4	4.1858	4.1872	3.9978	4.0000	4.0002	4.0068
80DU**	5	5 3/16	3 - 3 3/4	5.1844	5.1860	4.9961	4.9986	4.9988	5.0056
96DU**	6	6 3/16	3 - 3 3/4	6.1858	6.1874	5.9975	6.0000	6.0002	6.0070
112DU**	7	7 3/16	3 3/4	7.1812	7.1830	6.9929	6.9954	6.9956	7.0026



Plain Bearing Washers & Strip with PTFE Liner

PLAIN BEARING

Plain Bearing Metric DU Washers with PTFE Liner

Reference	I.D.	O.D.	Bore		Outside Diameter		Thickness		Dowell Hole Diameter		Dowell Hole PCD	
	mm				Tolerance in mm				mm		mm	
DU10	10	20	10	10.25	19.75	20.00	1.45	1.5	No Hole		17.88	18.12
DU12	12	24	12	12.25	23.75	24.00	1.45	1.5	1.625	1.875	17.88	18.12
DU14	14	26	14	14.25	25.75	26.00	1.45	1.5	2.125	2.375	19.88	20.12
DU16	16	30	16	16.25	29.75	30.00	1.45	1.5	2.125	2.375	21.88	22.12
DU18	18	32	18	18.25	31.75	32.00	1.45	1.5	3.125	3.375	24.88	25.12
DU20	20	36	20	20.25	35.75	36.00	1.45	1.5	3.125	3.375	27.88	28.12
DU22	22	38	22	22.25	37.75	38.00	1.45	1.5	3.125	3.375	29.88	30.12
DU24	24	42	24	24.25	41.75	42.00	1.45	1.5	3.125	3.375	32.88	33.12
DU26	26	44	26	26.25	43.75	44.00	1.45	1.5	3.125	3.375	34.88	35.12
DU28	28	48	28	28.25	47.75	48.00	1.45	1.5	4.125	4.375	37.88	38.12
DU32	32	54	32	32.25	53.75	54.00	1.45	1.5	4.125	4.375	42.88	43.12
DU38	38	62	38	38.25	61.75	62.00	1.45	1.5	4.125	4.375	49.88	50.12
DU42	42	66	42	42.25	65.75	66.00	1.45	1.5	4.125	4.375	53.88	54.12
DU48	48	74	48	48.25	73.75	74.00	1.95	2.0	4.125	4.375	60.88	61.12
DU52	52	78	52	52.25	77.75	78.00	1.95	2.0	4.125	4.375	64.88	65.12
DU62	62	90	62	62.25	90.75	90.00	1.95	2.0	4.125	4.375	64.88	65.12
DU95	95	115	95	95.25	115.00	114.75	1.95	2.0	4.125	4.375	105.87	106.12

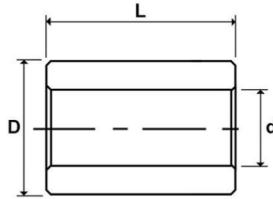
Plain Bearing Imperial DU Washers with PTFE Liner

Reference	I.D.	O.D.	Bore		Outside Diameter		Thickness		Dowell Hole Diameter		Dowell Hole PCD	
	inch				Tolerance in inch				inch		inch	
DU06-I	1/2	7/8	0.500	0.510	0.865	0.875	0.061	0.063	0.067	0.077	0.682	0.692
DU07-I	9/16	1	0.562	0.572	0.990	1.000	0.061	0.063	0.067	0.077	0.776	0.786
DU08-I	5/8	1 1/8	0.625	0.635	1.115	1.125	0.061	0.063	0.099	0.109	0.870	0.880
DU09-I	11/16	1 3/16	0.687	0.697	1.177	1.187	0.061	0.063	0.099	0.109	0.932	0.942
DU10-I	3/4	1 1/4	0.750	0.760	1.240	1.250	0.061	0.063	0.099	0.109	0.995	1.005
DU11-I	13/16	1 3/8	0.812	0.822	1.365	1.375	0.061	0.063	0.099	0.109	1.089	1.099
DU12-I	7/8	1 1/2	0.875	0.885	1.490	1.500	0.061	0.063	0.130	0.140	1.182	1.192
DU14-I	1	1 3/4	1.000	1.010	1.740	1.750	0.061	0.063	0.130	0.140	1.370	1.380
DU16-I	1 1/8	2	1.125	1.135	1.990	2.000	0.061	0.063	0.161	0.171	1.557	1.567
DU18-I	1 1/4	2 1/8	1.250	1.260	2.115	2.125	0.061	0.063	0.161	0.171	1.682	1.692
DU20-I	1 3/8	2 1/4	1.375	1.385	2.240	2.250	0.061	0.063	0.161	0.171	1.807	1.817
DU22-I	1 1/2	2 1/2	1.500	1.510	2.490	2.500	0.061	0.063	0.192	0.202	1.995	2.005
DU24-I	1 5/8	2 3/8	1.625	1.635	2.615	2.625	0.061	0.063	0.192	0.202	2.120	2.130
DU26-I	1 3/4	2 3/4	1.750	1.760	2.740	2.750	0.061	0.063	0.192	0.202	2.245	2.255
DU28-I	2	3	2.000	2.010	2.990	3.000	0.091	0.093	0.192	0.202	2.495	2.505
DU30-I	2 1/8	3 1/8	2.125	2.135	3.115	3.125	0.091	0.093	0.192	0.202	2.620	2.630
DU32-I	2 1/4	3 1/4	2.250	2.260	3.240	3.250	0.091	0.093	0.192	0.202	2.745	2.755

Plain Bearing Metric Strip with PTFE Liner

Reference	Length	Width	Thickness	
		(mm)		
TFS07150	500	150	0.704	0.744
TFS10200	500	215	0.950	0.990
TFS15240	500	245	1.470	1.510
TFS20240	500	245	1.960	2.000
TFS25240	500	245	2.460	2.500
TFS30240	500	245	3.020	3.060

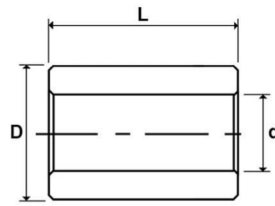




Wrapped Metric Plain Bearing (MB...Dx Bush) with Acetal Liner

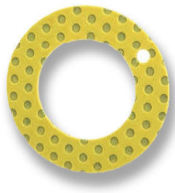
PLAIN BEARING

Reference (d x L)	Bore (mm) d	Outside Diameter (mm) D	Available Length (mm) L Tolerance +/- 0.25mm	Recommended Tolerances (mm)		Bearing size when fitted (mm) Bore		Oil Hole Diameter (mm)
				Housing	Shaft			
MB08**DX	8	10	8 - 10 - 12	0 +0.015	0 -0.022	8.04	8.107	No Hole
MB10**DX	10	12	10 - 12 - 15 - 20	0 +0.018	0 -0.022	10.04	10.11	4
MB12**DX	12	14	10 - 12 - 15 - 20 - 25	0 +0.018	0 -0.027	12.04	12.11	4
MB14**DX	14	16	15 - 20 - 25	0 +0.018	0 -0.027	14.04	14.11	4
MB15**DX	15	17	10 - 12 - 15 - 25	0 +0.018	0 -0.027	15.04	15.108	4
MB16**DX	16	18	15 - 20 - 25	0 +0.018	0 -0.027	16.04	16.11	4
MB18**DX	18	20	15 - 20 - 25	0 +0.021	0 -0.027	18.04	18.111	4
MB20**DX	20	23	10 - 15 - 20 - 25 - 30	0 +0.021	0 -0.033	20.05	20.131	4
MB22**DX	22	25	15 - 20 - 25 - 30	0 +0.021	0 -0.033	22.05	22.131	6
MB24**DX	24	27	15 - 20 - 25 - 30	0 +0.021	0 -0.033	24.05	24.131	6
MB25**DX	25	28	15 - 20 - 25 - 30	0 +0.021	0 -0.033	25.05	25.131	6
MB28**DX	28	32	20 - 25 - 30	0 +0.025	0 -0.033	28.06	28.155	6
MB30**DX	30	34	20 - 30 - 40	0 +0.025	0 -0.033	30.06	30.155	6
MB32**DX	32	36	20 - 30 - 35 - 40	0 +0.025	0 -0.039	32.06	32.155	6
MB35**DX	35	39	20 - 30 - 35 - 50	0 +0.025	0 -0.039	35.06	35.155	6
MB40**DX	40	44	20 - 30 - 40 - 50	0 +0.025	0 -0.039	40.06	40.155	8
MB45**DX	45	50	20 - 30 - 40 - 45 - 50	0 +0.025	0 -0.039	45.08	45.195	8
MB50**DX	50	55	40 - 50 - 60	0 +0.03	0 -0.039	50.08	50.2	8
MB55**DX	55	60	20 - 25 - 30 - 40 - 50 - 60	0 +0.03	0 -0.046	55.08	55.2	8
MB60**DX	60	65	30 - 40 - 60 - 70	0 +0.03	0 -0.046	60.08	60.2	8
MB65**DX	65	70	40 - 50 - 60 - 70	0 +0.03	0 -0.046	65.1	65.262	8
MB70**DX	70	75	25 - 40 - 50 - 65 - 70 - 80	0 +0.03	0 -0.046	70.1	70.262	8
MB75**DX	75	80	40 - 60 - 80	0 +0.03	0 -0.046	75.1	75.262	9.5
MB80**DX	80	85	40 - 60 - 80 - 100	0 +0.035	0 -0.046	80.1	80.267	9.5
MB85**DX	85	90	30 - 40 - 60 - 80 - 100	0 +0.035	0 -0.054	85.1	85.267	9.5
MB90**DX	90	95	25 - 40 - 60 - 80 - 90 - 100	0 +0.035	0 -0.054	90.1	90.267	9.5
MB95**DX	95	100	60 - 100	0 +0.035	0 -0.054	95.1	95.267	9.5
MB100**DX	100	105	50 - 60 - 80 - 95 - 115	0 +0.035	0 -0.054	100.1	100.267	9.5
MB105**DX	105	110	60 - 115	0 +0.035	0 -0.054	105.1	105.267	9.5
MB110**DX	110	115	60 - 110 - 115	0 +0.035	0 -0.054	110.1	110.267	9.5
MB115**DX	115	120	50 - 70	0 +0.035	0 -0.054	115.1	115.267	9.5
MB120**DX	120	125	60 - 100 - 110	0 +0.04	0 -0.054	120.1	120.272	9.5
MB125**DX	125	130	60 - 100 - 110	0 +0.04	0 -0.063	125.1	125.272	9.5
MB130**DX	130	135	50 - 60 - 80 - 100	0 +0.04	0 -0.063	130.13	130.280	No Hole
MB135**DX	135	140	60 - 80	0 +0.04	0 -0.063	135.13	135.28	No Hole
MB140**DX	140	145	50 - 60 - 80 - 100	0 +0.04	0 -0.063	140.13	140.28	No Hole
MB145**DX	145	150	100	0 +0.04	0 -0.063	145.13	145.28	No Hole
MB150**DX	150	155	50 - 60 - 80 - 100	0 +0.04	0 -0.063	150.13	150.28	No Hole
MB160**DX	160	165	50 - 60 - 80 - 100	0 +0.04	0 -0.063	160.13	160.28	No Hole
MB170**DX	170	175	50 - 60 - 80 - 100	0 +0.04	0 -0.063	170.13	170.28	No Hole
MB180**DX	180	185	50 - 60 - 80 - 100	0 +0.046	0 -0.063	180.13	180.286	No Hole
MB190**DX	190	195	50 - 60 - 80 - 100 - 120	0 +0.046	0 -0.072	190.13	190.286	No Hole
MB200**DX	200	205	50 - 60 - 80 - 100 - 120	0 +0.046	0 -0.072	200.13	200.286	No Hole
MB220**DX	220	225	50 - 60 - 80 - 100 - 120	0 +0.046	0 -0.072	220.13	220.286	No Hole
MB240**DX	240	245	50 - 60 - 80 - 100 - 120	0 +0.046	0 -0.072	240.13	240.286	No Hole
MB250**DX	250	255	50 - 60 - 80 - 100 - 120	0 +0.052	0 -0.072	250.13	250.292	No Hole
MB260**DX	260	265	50 - 60 - 80 - 100 - 120	0 +0.052	0 -0.081	260.13	260.292	No Hole
MB280**DX	280	285	50 - 60 - 80 - 100 - 120	0 +0.052	0 -0.081	280.13	280.292	No Hole
MB300**DX	300	305	60 - 80 - 100 - 120	0 +0.052	0 -0.081	300.13	300.292	No Hole



Wrapped Imperial Plain Bearing (...DX... Bush) with Acetal Liner

Reference (d x L)	Bore (inch) d	Outside Diameter (inch) D	Available Length (inch) L Tolerance +/- 0.010"	Recommended Tolerances (inch)				Bearing size when fitted (inch)	
				Housing		Shaft		Bore	
06DX**	3/8	15/32	3/8 - 1/2 - 3/4	0.4694	0.4687	0.3648	0.3639	0.3694	0.3667
07DX**	7/16	17/32	1/2 - 3/4	0.5319	0.5312	0.4273	0.4263	0.4319	0.4292
08DX**	1/2	19/32	3/8 - 1/2 - 5/8 - 7/8	0.5944	0.5937	0.4897	0.4887	0.4944	0.4917
09DX**	9/16	21/32	1/2 - 3/4	0.6569	0.6562	0.5522	0.5512	0.5569	0.5542
10DX**	5/8	23/32	1/2 - 5/8 - 3/4 - 7/8	0.7195	0.7187	0.6146	0.6136	0.6195	0.6167
11DX**	11/16	25/32	7/8	0.7820	0.7812	0.6770	0.6760	0.6820	0.6792
12DX**	3/4	7/8	1/2 - 3/4 - 1	0.8758	0.8750	0.7390	0.7378	0.7444	0.7412
14DX**	7/8	1	3/4 - 7/8 - 1	1.0008	1.0000	0.8639	0.8627	0.8694	0.8662
16DX**	1	1 1/8	3/4 - 1 - 1 1/2	1.1258	1.1250	0.9888	0.9876	0.9944	0.9912
18DX**	1 1/8	1 9/32	3/4 - 1	1.2822	1.2812	1.1138	1.1126	1.1202	1.1164
20DX**	1 1/4	1 13/32	3/4 - 1 - 1 1/4 - 1 3/4	1.4072	1.4062	1.2387	1.2371	1.2452	1.2414
22DX**	1 3/8	1 17/32	1 - 1 3/8 - 1 3/4	1.5322	1.5312	1.3635	1.3619	1.3702	1.3664
24DX**	1 1/2	1 21/32	1 - 1 1/4 - 1 1/2 - 2	1.6572	1.6562	1.4884	1.4868	1.4952	1.4914
26DX**	1 5/8	1 25/32	1 - 1 1/2	1.7822	1.7812	1.6133	1.6117	1.6202	1.6164
28DX**	1 3/4	1 15/16	1 - 1 1/2 - 1 3/4 - 2	1.9385	1.9375	1.7393	1.7367	1.7461	1.7415
30DX**	1 7/8	2 1/16	1 - 1 7/8 - 2 1/4	2.0637	2.0625	1.8632	1.8616	1.8713	1.8665
32DX**	2	2 3/16	1 - 1 1/2 - 2 - 2 1/2	2.1887	2.1875	1.9881	1.9863	1.9963	1.9915
36DX**	2 1/4	2 7/16	2 - 2 1/4 - 2 1/2	2.4387	2.4375	2.2378	2.2360	2.2463	2.2415
40DX**	2 1/2	2 11/16	2 - 2 1/2	2.6887	2.6875	2.4875	2.4857	2.4963	2.4915
44DX**	2 3/4	2 15/16	2 - 2 1/2 - 3 - 3 1/2	2.9387	2.9395	2.7351	2.7333	2.7457	2.7393
48DX**	3	3 3/16	2 - 3 - 3 3/4	3.1889	3.1875	3.9849	3.9831	2.9959	2.9893
56DX**	3 1/2	3 11/16	2 1/2 - 3 - 3 3/4	3.6889	3.6875	3.4844	3.4822	3.4959	3.4893
64DX**	4	4 3/16	3 - 3 3/4 - 4 3/4	4.1889	4.1872	4.9839	4.9817	3.9959	3.9893



Plain Bearing Washers & Strip with Acetal Liner

PLAIN BEARING

Plain Bearing Metric DX Washers with Acetal Liner

Reference	I.D.	O.D.	Bore		Outside Diameter		Thickness		Dowell Hole Diameter		Dowell Hole PCD	
	mm				Tolerance in mm				mm		mm	
DX12	12	24	12	12.25	23.75	24.00	1.487	1.577	1.625	1.875	17.88	18.12
DX14	14	26	14	14.25	25.75	26.00	1.487	1.577	2.125	2.375	19.88	20.12
DX16	16	30	16	16.25	29.75	30.00	1.487	1.577	2.125	2.375	21.88	22.12
DX18	18	32	18	18.25	31.75	32.00	1.487	1.577	2.125	2.375	24.88	25.12
DX20	20	36	20	20.25	35.75	36.00	1.487	1.577	3.125	2.375	27.88	28.12
DX22	22	38	22	22.25	37.75	38.00	1.487	1.577	3.125	2.375	29.88	30.12
DX24	24	42	24	24.25	41.75	42.00	1.487	1.577	3.125	2.375	32.88	33.12
DX26	26	44	26	26.25	43.75	44.00	1.487	1.577	3.125	2.375	34.88	35.12
DX28	28	48	28	28.25	47.75	48.00	1.487	1.577	4.125	4.375	37.88	38.12
DX32	32	54	32	32.25	53.75	54.00	1.487	1.577	4.125	4.375	42.88	43.12
DX38	38	62	38	38.25	61.75	62.00	1.487	1.577	4.125	4.375	49.88	50.12
DX42	42	66	42	42.25	65.75	66.00	1.487	1.577	4.125	4.375	53.88	54.12
DX48	48	74	48	48.25	73.75	74.00	2.510	2.600	4.125	4.375	60.88	61.12
DX52	52	78	52	52.25	77.75	78.00	2.510	2.600	4.125	4.375	64.88	65.12

Plain Bearing Imperial DX Washers with Acetal Liner

Reference	I.D.	O.D.	Bore		Outside Diameter		Thickness		Dowell Hole Diameter		Dowell Hole PCD	
	inch				Tolerance in inch				inch		inch	
DX06-I	1/2	7/8	0.500	0.510	0.865	0.875	0.0625	0.0660	0.067	0.077	0.682	0.692
DX07-I	9/16	1	0.562	0.572	0.990	1.000	0.0625	0.0660	0.067	0.077	0.776	0.786
DX08-I	5/8	1 1/8	0.625	0.635	1.115	1.125	0.0625	0.0660	0.099	0.109	0.870	0.880
DX09-I	11/16	1 3/16	0.687	0.697	1.177	1.187	0.0625	0.0660	0.099	0.109	0.932	0.942
DX10-I	3/4	1 1/4	0.750	0.760	1.240	1.250	0.0625	0.0660	0.099	0.109	0.995	1.005
DX11-I	13/16	1 3/8	0.812	0.822	1.365	1.375	0.0625	0.0660	0.099	0.109	1.089	1.099
DX12-I	7/8	1 1/2	0.875	0.885	1.490	1.500	0.0625	0.0660	0.130	0.140	1.182	1.192
DX14-I	1	1 3/4	1.000	1.010	1.740	1.750	0.0625	0.0660	0.130	0.140	1.370	1.380
DX16-I	1 1/8	2	1.125	1.135	1.990	2.000	0.0625	0.0660	0.161	0.171	1.557	1.567
DX18-I	1 1/4	2 1/8	1.250	1.260	2.115	2.125	0.0625	0.0660	0.161	0.171	1.682	1.692
DX20-I	1 3/8	2 1/4	1.375	1.385	2.240	2.250	0.0625	0.0660	0.161	0.171	1.807	1.817
DX22-I	1 1/2	2 1/2	1.500	1.510	2.490	2.500	0.0625	0.0660	0.192	0.202	1.995	2.005
DX24-I	1 5/8	2 5/8	1.625	1.635	2.615	2.625	0.0625	0.0660	0.192	0.202	2.120	2.130
DX26-I	1 3/4	2 3/4	1.750	1.760	2.740	2.750	0.0625	0.0660	0.192	0.202	2.245	2.255
DX28-I	2	3	2.000	2.010	2.990	3.000	0.0935	0.0970	0.192	0.202	2.495	2.505
DX30-I	2 1/8	3 1/8	2.125	2.135	3.115	3.125	0.0935	0.0970	0.192	0.202	2.620	2.630
DX32-I	2 1/4	3 1/4	2.250	2.260	3.240	3.250	0.0935	0.0970	0.192	0.202	2.745	2.755

Plain Bearing Metric Strip with Acetal Liner

Reference	Length	Width	Thickness	
			(mm)	
TXS10070	460	70	1.03	1.07
TXS15100	460	100	1.52	1.56
TXS20100	460	100	2.01	2.05
TXS25100	460	100	2.52	2.57
TXS30200	500	200	3.02	3.09

